

# IDENTIFICATION BROCHURE

SOUTH AFRICA  
EFFECTIVE FROM OCTOBER 2023



[leaderproducts.com](http://leaderproducts.com)

**Leaders in the field**  
since 1948


# CONTENTS

	LEADER STORY	3
	VISUAL CATTLE IDENTIFICATION TWO PIECE RANGE	4 - 8
	ELECTRONIC CATTLE IDENTIFICATION	9
	ELECTRONIC SHEEP/GOAT IDENTIFICATION	10
	VISUAL SHEEP/GOAT IDENTIFICATION	11
	LASER MARKING - CATTLE	12
	LASER MARKING SHEEP/GOAT	13
	LASER MARKING	14
	ACCESSORIES	15
	CATTLE IDENTIFICATION APPLICATORS	16
	SHEEP IDENTIFICATION APPLICATORS	17
	NOTES	18 - 19

## HOW TO ORDER

### STOCK CODES - HOW TO ORDER

Where specific colours are required for an ID Product you will need to apply the following Final Order Code method.

VISUAL CATTLE IDENTIFICATION - TWO PIECE RANGE										
										
<b>SUPER MAXI FEMALE</b> <b>Marking Options:</b> Laser or <b>Dimensions:</b> 75.30 (w) x 119.10 (h) mm <b>Weight:</b> 12.20 grams										
GREY	BROWN	PURPLE	GREEN	PINK	ORANGE	YELLOW	WHITE	BLACK	RED	BLUE
1	2	3	4	5	6	7	8	9	10	11
<b>Note:</b> Price does not include Male Button										

**2PSM**

**A**

**Note:** Excludes Male Tag and Marking (to match the pricebook)

**A + B = FINAL ORDER CODE**

2PSM + 6 = **2PSM6**

# LEADER STORY

Leader Products Pty Ltd is a wholly Australian-owned company which began as a specialist manufacturer and distribution of livestock identification equipment since 1948.

In 1950, Leader Products started producing Australia's first plastic ear tags for sheep and by 1956, had become the predominant supplier for ID tags to the Australian and New Zealand sheep industries.

In the 1960's, Leader Products began producing cattle tags for the Australian livestock industry. Innovative designs like their two-piece ear tags were patented in the 1980's and further established their stake as an innovator

in livestock identification and animal husbandry products.

In addition to their patented identification tags and applicators, Leader Product is also a wholesale distributions of an extensive range of animal husbandry supplies & equipment.

Now, with the gradual expansion of the Leader Product. Leader Product has launched its e-commerce platform. Our E-Commerce platform caters for large Wholesalers, Resellers and their customers' needs. Customers can design and manage labels according to their own needs. In the future, new functions on the e-commerce platform will be more perfect.



# VISUAL CATTLE IDENTIFICATION TWO PIECE RANGE



## SMALL FEMALE

2PS

The Small Female is a two piece tag, designed for ease of application and the toughest conditions. They are available in 7 bright colours and designed to withstand the harshest of UV conditions to ensure sustainability and avoid fading.

Small Female tags are applied using the Applicator Two Piece Tags.

PURPLE	GREEN	PINK	ORANGE	YELLOW	RED	BLUE
3	4	5	6	7	10	11

**Marking Options:** Laser

**Dimensions:** 47.80 (w) x 53.20 (h) mm

**Weight:** 4.77 grams

**Note:** Excludes Male Tag and Marking



## LARGE FEMALE

2PL

The Large Female is a two piece tag, designed for ease of application and the toughest conditions. They are available in 9 bright colours and designed to withstand the harshest of UV conditions to ensure sustainability and avoid fading.

Large Female tags are applied using the Applicator Two Piece Tags.

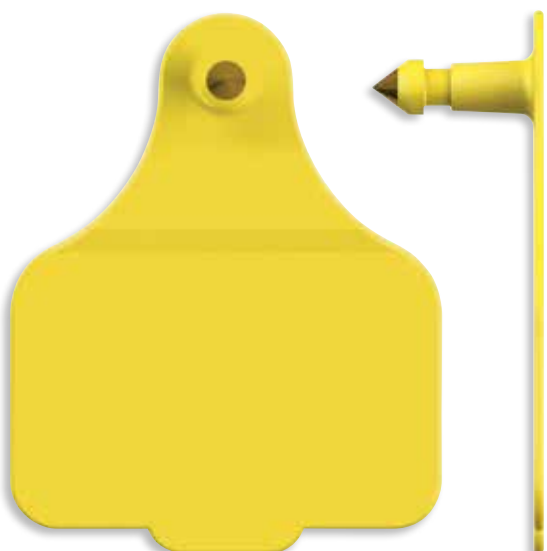
PURPLE	GREEN	PINK	ORANGE	YELLOW	WHITE	BLACK	RED	BLUE
3	4	5	6	7	8	9	10	11

**Marking Options:** Laser

**Dimensions:** 58.20 (w) x 72.50 (h) mm

**Weight:** 6.90 grams

**Note:** Excludes Male Tag and Marking



## LARGE MALE

ML

The Large Male is a two piece tag, designed for ease of application and the toughest conditions. They are available in 4 bright colours and designed to withstand the harshest of UV conditions to ensure sustainability and avoid fading.

Suitable for all operations where visual identification is required from the rear of the animal.

Large Male tags applied using the Applicator Two PieceTags.

PURPLE	GREEN	YELLOW	RED
3	4	7	10

**Marking Options:** Laser

**Dimensions:** 58.20 (w) x 72.60 (h) mm

**Weight:** 6.40 grams

**Note:** Excludes Female Tag and Marking

# VISUAL CATTLE IDENTIFICATION TWO PIECE RANGE



## MAXI FEMALE

2PMX

The Maxi Female is a two piece tag designed for ease of application and the toughest conditions. They are available in 9 bright colours and designed to withstand the harshest of UV conditions to ensure sustainability and avoid fading.

The Maxi Female has a shorter neck than the Super Maxi Female, making it a popular tag for stud cattle and dairy applications, providing a large surface area for marking, and giving excellent readability from long distances.

Maxi Female tags are applied using the Applicator Two Piece Tags.

PURPLE	GREEN	PINK	ORANGE	YELLOW	WHITE	BLACK	RED	BLUE
3	4	5	6	7	8	9	10	11

**Marking Options:** Laser

**Dimensions:** 74.00 (w) x 101.30 (h) mm

**Weight:** 11.90 grams

**Note:** Excludes Male Tag and Marking



## SUPER MAXI FEMALE

2PSM

The Super Maxi Female is a two piece tag designed for ease of application and the toughest conditions. They are available in 7 bright colours and designed to withstand the harshest of UV conditions to ensure sustainability and avoid fading.

It is the largest two piece tag in the Leader range, providing a large surface area for marking, giving excellent readability from long distances.

The Super Maxi Female tags are applied using the Applicator Two Piece Tags.

GREEN	ORANGE	YELLOW	WHITE	BLACK	RED	BLUE
4	6	7	8	9	10	11

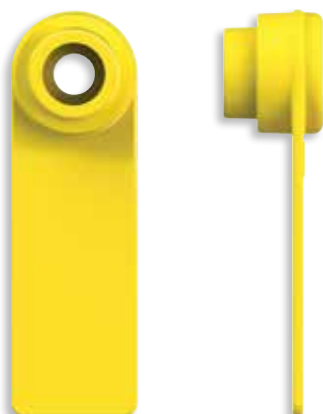
**Marking Options:** Laser

**Dimensions:** 75.30 (w) x 119.60 (h) mm

**Weight:** 12.20 grams

**Note:** Excludes Male Tag and Marking

# VISUAL CATTLE IDENTIFICATION TWO PIECE RANGE



## MINI FEMALE

2PMI

The Mini Female is a two piece tag, designed for ease of application and the toughest conditions. They are available in 1 bright colour and designed to withstand the harshest of UV conditions to ensure sustainability and avoid fading.

Mini Female tags are applied using the Applicator Two Piece Tags.

YELLOW

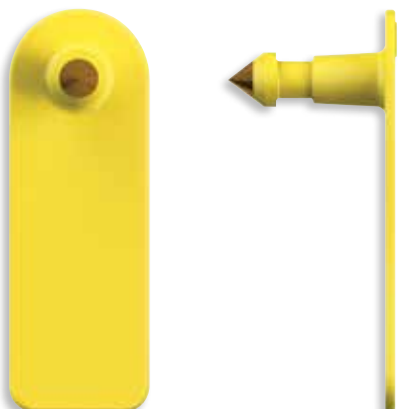
7

**Marking Options:** Laser

**Dimensions:** 16.30 (w) x 52.00 (h) mm

**Weight:** 2.10 grams

**Note:** Excludes Male Tag and Marking



## MINI MALE

MMI

The Mini Male is a two piece tag, designed for ease of application and the toughest conditions. They are available in 1 bright colour and designed to withstand the harshest of UV conditions to ensure sustainability and avoid fading.

Suitable for all operations where visual identification is required from the rear of the animal.

Mini Male tags are applied using the Applicator Two Piece Tags.

YELLOW

7

**Marking Options:** Laser

**Dimensions:** 18.50 (w) x 53.00 (h) mm

**Weight:** 2.40 grams

**Note:** Excludes Female Tag and Marking



## BUTTON MALE

MB

The Button Male is a two piece tag, designed for ease of application and the toughest conditions. They are available in 9 bright colours and designed to withstand the harshest of UV conditions to ensure sustainability and avoid fading.

Button Male tags are applied using the Applicator Two Piece Tags.

PURPLE	GREEN	PINK	ORANGE	YELLOW	WHITE	BLACK	RED	BLUE
3	4	5	6	7	8	9	10	11

**Marking Options:** Laser

**Dimensions:** 28.00 dia. x 23.10 (h) mm

**Weight:** 2.11 grams

**Note:** Excludes Female Tag and Marking

# VISUAL CATTLE IDENTIFICATION TWO PIECE RANGE



## SMALL FEMALE TAMPER PROOF

2PST

The Small Female Tamper Proof Tag is a two piece tamper proof tag designed for ease of application and the toughest conditions. They are available in 9 bright colours and designed to withstand the harshest of UV conditions to ensure sustainability and avoid fading.

The Small Female Tamper Proof tags are applied using the Applicator Two Piece Tags.

PURPLE	GREEN	PINK	ORANGE	YELLOW	WHITE	BLACK	RED	BLUE
3	4	5	6	7	8	9	10	11

**Marking Options:** Laser

**Dimensions:** 58.00 (w) x 57.00 (h) mm

**Weight:** 5.40 grams

**Note:** Excludes Male Tag and Marking



## LARGE FEMALE TAMPER PROOF

2PLT

The Large Female Tamper Proof Tag is a two piece tamper proof tag designed for ease of application and the toughest conditions. They are available in 7 bright colours and designed to withstand the harshest of UV conditions to ensure sustainability and avoid fading.

The Large Female Tamper Proof tags are applied using the Applicator Two Piece Tags.

PURPLE	GREEN	PINK	ORANGE	YELLOW	RED	BLUE
3	4	5	6	7	10	11

**Marking Options:** Laser

**Dimensions:** 58.20 (w) x 72.60 (h) mm

**Weight:** 6.60 grams

**Note:** Excludes Male Tag and Marking

# VISUAL CATTLE IDENTIFICATION TWO PIECE RANGE



## MAXI FEMALE TAMPER PROOF

2PMXT

The Maxi Female Tamper Proof Tag is a two piece tamper proof tag designed for ease of application and the toughest conditions. They are available in 7 bright colours and designed to withstand the harshest of UV conditions to ensure sustainability and avoid fading.

It is the largest two piece tag in the visual tamper proof tag range, providing a large surface area for marking, giving excellent readability from long distances.

The Maxi Female Tamper Proof tags are applied using the Applicator Two Piece Tags.

GREEN	ORANGE	YELLOW	WHITE	BLACK	RED	BLUE
4	6	7	8	9	10	11

**Marking Options:** Laser

**Dimensions:** 74.00 (w) x 102.65 (h) mm

**Weight:** 10.70 grams

**Note:** Excludes Male Tag and Marking



## SUPER MAXI FEMALE TAMPER PROOF

2PSMT

The Super Maxi Female Tamper Proof Tag is a two piece tamper proof tag designed for ease of application and the toughest conditions. They are available in 7 bright colours and designed to withstand the harshest of UV conditions to ensure sustainability and avoid fading.

It is the largest two piece tag in the visual tamper proof tag range, providing a large surface area for marking, giving excellent readability from long distances.

The Super Maxi Female Tamper Proof tags are applied using the Applicator Two Piece Tags.

GREEN	ORANGE	YELLOW	WHITE	BLACK	RED	BLUE
4	6	7	8	9	10	11

**Marking Options:** Laser

**Dimensions:** 75.30 (w) x 120.90 (h) mm

**Weight:** 12.60 grams

**Note:** Excludes Male Tag and Marking



# ELECTRONIC CATTLE IDENTIFICATION



## EID REUSABLE

## EIDCR

The EID Reusable is an electronic identification tag and is designed to handle the toughest conditions with great retention and read distance.

As the female portion of the tag can be reused from one animal to another. Button Males need to be replaced for each animal transfer and are available separately.

EID Reusable tags are applied using the Applicator Two Piece Tags.

YELLOW WHITE BLUE

7

8

11

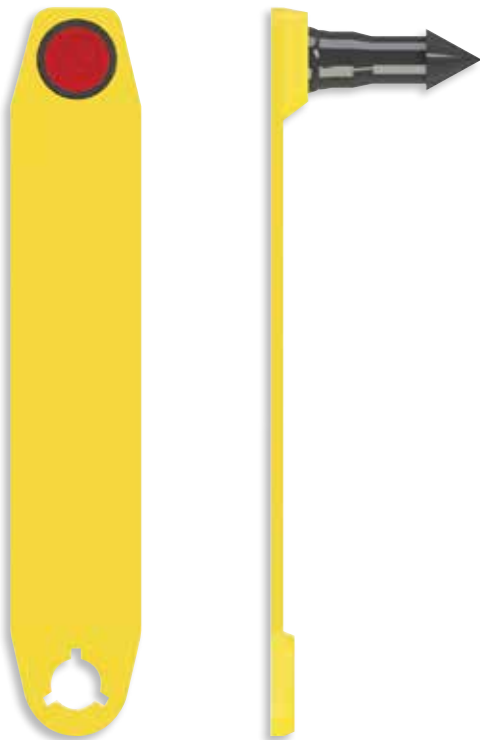
**Transponder Type:** HDX 134.2kHz Inlay

**Approvals:** None

**Weight:** 8.60 grams

**Note:** Includes Laser Marking. Button Male Not Included

# ELECTRONIC SHEEP/GOAT IDENTIFICATION



## MULTIPIN

## EMPS

The Multipin is an electronic identification one piece tag used for the effective identification of sheep and goats. The Multipin tags are supplied in strips of 10. Consisting of a large print surface to allow for more options when laser marking.

They are available in 2 bright colours and designed to withstand the harshest of UV conditions to ensure sustainability and avoid fading.

Multipin tags are applied using the Applicator Multi 3 in 1.

YELLOW WHITE

7

8

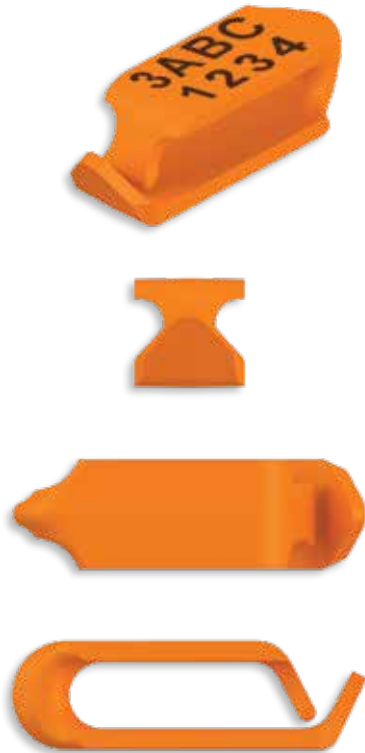
**Transponder Type:** HDX 134.2kHz E-Rod

**Approvals:** ICAR

**Weight:** 2.77 grams

**Note:** Includes Laser Marking

# VISUAL SHEEP/GOAT IDENTIFICATION



## LEADERTAG

LT

The Leadertag is used for long term application and better stock management. The tags come with strong arms and possess anti-snagging design. The shape of the product holds the tag in correct position at all times in the animals ear.

They are available in 8 bright colours and designed to withstand the harshest of UV conditions to ensure sustainability and avoid fading.

The Leadertags are applied using the Applicator Aluminum Leadermatic.

PURPLE	GREEN	PINK	ORANGE	YELLOW	WHITE	RED	BLUE
3	4	5	6	7	8	10	11

**Approvals:** NLIS

**Dimensions:** 12.70 (w) x 41.21 (l) x 12.60 (d) mm

**Weight:** 2.00 grams

**Note:** Excludes Laser Marking

# LASER MARKING CATTLE



## 1 LINE LASER MARKING

1L

The Leader laser marking system makes for permanent marking with the laser penetrating the tag and becoming part of the tag. Laser marking enables more flexibility in marking options.

### Marking Options:

One line of characters, number of characters varies due to the tag and print size.



## 2 LINE LASER MARKING

2L

The Leader laser marking system makes for permanent marking with the laser penetrating the tag and becoming part of the tag. Laser marking enables more flexibility in marking options.

### Marking Options:

Two lines of characters, number of characters varies due to the tag and print size.



## 3 LINE LASER MARKING

3L

The Leader laser marking system makes for permanent marking with the laser penetrating the tag and becoming part of the tag. Laser marking enables more flexibility in marking options.

### Marking Options:

Three lines of characters, number of characters varies due to the tag and print size.



## CUSTOMISED LASER MARKING

CL

The Leader laser marking system makes for permanent marking, with the laser penetrating and becoming part of the tag. Laser marking enables more flexibility in marking options.

Customized laser tags may be ordered with a virtually unlimited number of marking options, including logos, brands, numbers and bar codes.

**Marking Options:** Brands, Logos, Bar Codes

**Format Required:** .eps or vector

**Note:** Customised Laser Marking price is per tag. Customised Laser Set-Up price is per template

# LASER MARKING SHEEP/GOAT



## LASER MARKING SHEEP 1 LINE

1LSE

The Leader laser marking system makes for permanent marking with the laser penetrating the tag and becoming part of the tag. Laser marking enables more flexibility in marking options.

### Marking Options:

One line of characters, number of characters varies due to the tag and print size.



## LASER MARKING SHEEP 2 LINES

2LSE

The Leader laser marking system makes for permanent marking with the laser penetrating the tag and becoming part of the tag. Laser marking enables more flexibility in marking options.

### Marking Options:

Two lines of characters, number of characters varies due to the tag and print size.



## LASER MARKING SHEEP CUSTOMISED

3LSE

The Leader laser marking system makes for permanent marking, with the laser penetrating and becoming part of the tag. Laser marking enables more flexibility in marking options.

Customised laser tags may be ordered with a virtually unlimited number of marking options, including logos, brands, numbers and bar codes.

**Marking Options:** Brands, Logos, Bar Codes

**Format Required:** .svg

**Note:** Customised Laser Marking Sheep price is per tag.



# LASER MARKING SHEEP ELECTRONIC

## 1 LINE LASER MARKING SHEEP ELECTRONIC

1LSE

The Le.

### Marking Options:

One line of characters, number of characters varies due to the tag and print size.



## 2 LINE LASER MARKING SHEEP ELECTRONIC

2LSE

The Le.

### Marking Options:

Two lines of characters, number of characters varies due to the tag and print size.



## LASER MARKING SHEEP ELECTRONIC CUSTOM

CLSE

The Le.

### Marking Options:

Three lines of characters, number of characters varies due to the tag and print size.



# ACCESSORIES



## MARKING PEN (TAG) BLACK

**MPEN1000**

The Marking Pen has a broad tip and is quick-drying to assist in ensuring you get a good mark on your tags. Designed specifically to suit all weather conditions.

Available in black ink.

**Weight:** 25.00 grams

**Applicable Tags:** One Piece, Two Piece

# CATTLE IDENTIFICATION APPLICATORS



## APPLICATOR STANDARD DELUXE

SCA1002

The Applicator Standard Deluxe is made from solid diecast material and harden steel for the insertion pin to ensure against breakage or bending. Designed specifically for all weather conditions.

**Applicable Tags:** Enviro, Leadertronic, Two Piece Tag Range  
**Weight:** 350.00 grams



## APPLICATOR TWO PIECE TAGS

APPTP

The Applicator Two Piece Tags is made from solid diecast material and MIM technology for the insertion pin to ensure against breakage or bending. Designed specifically for all weather conditions.

**Applicable Tags:** Official EID, Official Flag EID, Enviro, Leadertronic and Visual Two Piece Tag Range.  
**Weight:** 465.00 grams

# SHEEP IDENTIFICATION APPLICATORS



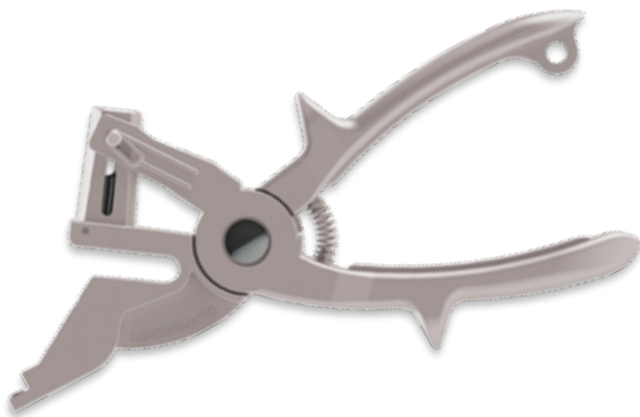
## APPLICATOR LITE MULTI 3 IN 1

APPLMT

The Applicator Lite Multi 3 in 1 is made from high grade aluminium to ensure no rusting and is light weight for ease of use.

**Applicable Tags:** Multitronic, Multipin, Multitag

**Weight:** 358.00 grams



## APPLICATOR ALUMINIUM LEADERMATIC

LTAA

The Applicator Aluminum Leadermatic punches a hole in the ear and inserts the tag in one easy action. Designed specifically for all weather conditions.

**Applicable Tags:** Jumbo EID, Leadertag

**Weight:** 315.00 grams

# NOTES



# NOTES

**LEADER PRODUCTS**

26 Piet Retief Avenue,  
Noordheuwel, Mogale City, 1739

**P** +27(0)73 111 3557



[www.4tags.co.za](http://www.4tags.co.za)

**E:** [sales@4tags.co.za](mailto:sales@4tags.co.za)

**T:** 082 424 6534

[leaderproducts.com](http://leaderproducts.com)